

# All Aboard 2024

April 26 -28, 2024

Corban Estate Arts Centre, West Auckland

Newsletter 6



## Venue

Corban Estate Arts Centre, [2 Mount Lebanon Lane, Henderson, Auckland.](#)

---

## Registration

Early bird registration has been extended until the 7th of April 2024

- Full registration fee is \$100 if paid by April 7th, 2024.
- The fee is \$120 for April 7 2024 onwards.

[Click here to Register](#)

---

## Competitions

Join the competition today! Let your treasured creations be assessed. Who knows? You could be the next winner!

[Online entry form](#)

---

## Layout Tours

### NZR (9mil)



Step into the world of New Zealand railroading with Trevor's exceptional 9 mil layout, a rare gem among the country's non-modular model railways. Nestled within a purpose-built 16m x 7m shed, this expansive layout is a masterful recreation of iconic New Zealand landscapes and rail scenes. Just two years ago, Trevor, alongside a group of renowned NZR modellers, introduced a meticulously crafted model of the Opua Wharf, capturing its historical essence. This significant addition not only enhances the layout's authenticity but also sets a cozy limit of twelve visitors at any given time, ensuring an intimate and immersive experience for each guest.

Trevor's layout stands as a testament to the beauty and intricacy of New Zealand's railway heritage, inviting enthusiasts to explore a carefully constructed world where every detail tells a story. This unique creation is a must-see for anyone passionate about model railroading, offering a glimpse into the heart of New Zealand's scenic rail journeys through the eyes of a dedicated modeller.

---

## **GN 60's Farewell Tour**



---

## Garden Railway



Michael's garden railway, a celebrated feature on television, stands as one of New Zealand's most renowned outdoor layouts. This enchanting setup welcomes both battery-powered and live steam locomotives, offering a versatile experience for all who visit. Since its last showcase in 2018, Michael has significantly enhanced the layout with an array of detailed scenery, bringing the landscapes to life with meticulous care. During the upcoming layout tours, guests will have the pleasure of seeing a variety of locomotives in action, each adding its own unique charm to the verdant backdrop of Michael's garden railway. This vibrant and dynamic display is a must-visit for enthusiasts eager to immerse themselves in the world of garden railroading, presented by a hobbyist whose passion and creativity know no bounds.

---

## The Southern Pacific joint line subdivision



Dive deep into the heart of Southern California's railway heritage with the **\*\*Southern Pacific Joint Line Subdivision\*\***. A prized piece of the Pacific Electric Railway's legacy,

this subdivision found its new guardian in the Southern Pacific in the pivotal year of 1965. Crafted with the model railway aficionado in mind, it boasts a meticulously designed double-deck HO scale layout. At its core, a single-track mainline winds through, flanked by two ingeniously constructed return loops, capturing the essence of railroading ingenuity. This marvel of model engineering leverages the sophisticated DCC (Digitrax) technology, ensuring a seamless and immersive operating experience. Now three years into its operation, it continues to awe and inspire, a testament to the enduring allure of model railroading.

---

## **The Grande Southern Railroad**



Prepare to be transported on an epic journey through the breathtaking vistas of the Rockies with **\*\*The Grande Southern Railroad\*\***. Spanning an expansive 5m x 6m area, this N scale layout is a masterclass in model railway design, powered by cutting-edge DCC technology. It pays homage to the legendary routes of the D&RGW and SP, meticulously capturing the rugged beauty of the Rocky Mountains. From the charm of its quaint small towns to the majestic, snow-capped hills, every inch of the layout is a tribute to the scenic grandeur of railroading through the Rockies. With a sprawling main line and two short lines operated by the BN/SF and UP, it offers a railroading experience as diverse as it is visually stunning, inviting enthusiasts to explore the rich tapestry of railway history and scenery.

---

## **The Western Springs Railway - MOTAT Prototype tour**



Embark on a journey back in time with the **\*\*Western Springs Railway - MOTAT Prototype Tour\*\***, a unique opportunity to delve into the world of steam-powered marvels and railway history. Nestled within the workshops of this historic site, enthusiasts will find three operational large steam locomotives: the venerable F-180 "Meg Merrilies," the robust L507, and the formidable Y542. These locomotives stand as living testaments to the golden age of steam, surrounded by an impressive collection of trains and railway vehicles that chronicle the evolution of rail travel.

But the journey doesn't end there. The tour offers a closer look at an eclectic mix of carriages, showcasing the variety and ingenuity of railcar design throughout the years. Additionally, visitors will discover a treasure trove of intriguing items, each with its own story to tell, offering insights into the daily operations and historical significance of these rail wonders.

And for those seeking a hands-on experience, enjoy the thrill of jigger rides. These rides provide a unique vantage point, blending the joy of railroading with the visceral connection to the tracks and landscapes that have been traversed by countless generations.

*Note: This tour is exclusively available on the Saturday of the Convention.*

---

## **Great Northern Minot Subdivision (Cira 1956) - Steve**



Dive into the meticulous world of model railroading with Steve's Great Northern Minot Subdivision, a breathtaking layout set in 1956. This multi-level, shelf-style masterpiece wraps around the room, with a helix connecting the levels for a seamless journey from point to point. The layout, designed for Car Card operations, features a mainline that stretches an impressive 148 meters (485 feet or 8 HO scale miles) between staging areas, enriched with Code 70 and 55 Microengineering Scale Rail and a Yard Ladder system. Despite the vast mainline, a branch line with its own helix descends to the lowest level, offering continuous running and return loops for re-staging trains, illustrating the layout's operational complexity and visual depth.

With track work 95% complete and a modest start on ballast and scenery, the Great Northern Minot Subdivision stands as a testament to the golden age of railroading. The meticulous detail and operational ingenuity invite enthusiasts to immerse themselves in a bygone era, brought to life through Steve's passion for model railroading.

---

## **Märklin Layout - Barry**



Barry's Märklin masterpiece, an expansive HO scale layout, brings to life the diverse landscapes of Europe with unparalleled detail and authenticity. After a nine-year hiatus from the layout tour scene, Barry's creation has undergone significant enhancements, transforming it into a marvel of modern model railroading. Among the notable upgrades, automated train control stands out, introducing a new level of operational sophistication and realism. Additionally, the integration of the Faller Car System revolutionizes how vehicles navigate the bustling roads of the layout, offering a dynamic and engaging portrayal of European life in miniature. This meticulously crafted layout is a testament to Barry's dedication and skill, inviting enthusiasts to explore the intricate beauty of European railroading through the lens of a truly exceptional Märklin layout.

## **Waitakere & Western Railway HO - Western Districts Model Railway Club Inc.**



The Western Districts Model Railway Club animates its HO/OO scale trains with a sophisticated control system that fuses custom DCC-EX, JMRI, and LocNet technologies alongside tailored boosters. This



clever setup, marked by its adept use of modern technology, elevates the club's layout. In recent years, significant enhancements to both the elaborate wiring and the scenic realism have transformed the display into a more engaging and lifelike miniature world.

Conceived in 1974 by a group of model railway enthusiasts united by their passion and a vision for communal resource sharing, the club has grown into a vibrant community that stands as a testament to the enduring appeal of model railroading. Celebrating its 50th anniversary this year, the Western Districts Model Railway Club not only commemorates a half-century of innovation and fellowship but also continues to inspire creativity and enthusiasm in the art of model railroading, solidifying its legacy as a cornerstone of the hobby for future enthusiasts.

[Click here to Register](#)

### **Waitakere & Western Railway N Scale - Western Districts Model Railway Club Inc.**



Discover the intricate beauty and technical prowess of the Waitakere & Western Railway's N Scale layout, a marvel of model railroading that seamlessly blends tradition and innovation. This peninsula-style layout offers the best of both worlds, accommodating both DC and DCC operations for an unparalleled railroading experience. Immerse yourself in the scenery that stretches across this extensive layout. Whether you're a seasoned model railroader or a curious newcomer, the Waitakere & Western Railway's N Scale layout invites you to explore the fascinating interplay of technology and artistry that defines this captivating hobby.

### **Freelance American Layout HO - Auckland Central Model Railway Club inc.**



The Auckland Central Model Railway Club Inc has been in existence since 1991 in several locations, until 2004 when we secured the club rooms we now enjoy in Mt. Wellington. We cover all facets of model railways with HO, OO and N scale layouts at the club rooms and club members doing a lot of other scales in their own homes. Our modelers come from a variety of modeling backgrounds and bring all levels and skills to the Club.

### **Sheffield OO Layout - Auckland Central Model Railway Club inc.**



There will also be the North Shore Model Railway Clubs portable NZR layout on site at the convention. As well as other displays, trade stands and some manufacturers.

*Please be aware that all layout tours are subject to modification. Circumstances beyond our control may necessitate changes to the schedule or the content of the tours.*

---

## Clinics

Our agenda includes a series of 10 clinics, each lasting 45 minutes including questions

Our clinics cover a broad spectrum of topics within the model railway hobby, and we are particularly excited to introduce subjects that have not been featured at previous NZAMRC conventions. In addition, we aim to spotlight the modern innovations within the hobby, catering to a wide range of interests and expertise levels.

Highlighted below are a few of the clinics we are looking forward to:

- **MOTAT PROTOTYPE Restoration by Graham Anderson:** Graham Anderson invites you to clinic where he will go over the details for the details of the process of restoring locomotives or carriages. This will then be followed up by the opportunity to go to MOTAT on one of the tours and see first hand the work that was done on the topics discussed in the clinic.
- **Building steam locomotives by Lawrence Boul:** In this session, we'll delve into the assembly of models like Wa217 (from etches) and We377 (scratchbuilt), with a focus on the 1:64 scale New Zealand Railways (NZR). The principles I'll share, however, have broad applicability across various scales and projects. The aim is to shed light on some of the complexities involved in model building, offering strategies I've developed over time to tackle challenging aspects and even introducing new challenges to stretch our skills further.
- **Arduino: DCC++ EX with Low Cost DCC Boosters by Gary Snow:** Gary Snow invites you to explore the innovative intersection of technology and model railroading with "Arduino: DCC++ EX with Low-Cost DCC Boosters." This insightful piece demystifies how the accessible and affordable Arduino platform can transform your model railway into a digitally controlled masterpiece. Gary's approach offers a budget-friendly gateway into the sophisticated world of Digital Command Control (DCC), enabling enthusiasts to enhance their setups with advanced functionalities without breaking the bank. Embrace the future of model railroading with Gary's expert guidance, and discover how Arduino can elevate your railway experience to new heights of interactivity and precision.
- **Understanding Free-mo by James Kelso:** James Kelso's clinic on Free-mo, a revolutionary approach to model railroading that combines the flexibility of modular layouts with the coherence and detail of permanent or sectional layouts. In this clinic, we delve into the essence of Free-mo, exploring its operations, versatility, and how enthusiasts can leverage its modularity for enhanced railroading experiences.
- **Preparing and Assembling 3D Prints by Lewis Holden:** Lewis Holden offers a deep dive into the cutting-edge world of 3D printing in his latest feature, "Preparing and Assembling 3D Prints." This guide provides model railway enthusiasts with invaluable insights into the meticulous process of preparing and assembling 3D printed components, a revolutionary approach to model building. Whether you're a seasoned modeler or new to the 3D printing scene, Lewis's expert advice will

equip you with the knowledge and techniques needed to seamlessly integrate 3D printed elements into your layouts, enhancing realism and detail with this innovative technology.

- **Railway Work Equipment in Operations by Joshua Hill:** "Railway Work Equipment in Operations" by Joshua Hill offers an in-depth look at the critical yet often overlooked aspects of railway work equipment. This clinic will unveil the operational roles and significance of these tools in the rail industry, providing insights on how to incorporate them into your model layouts for increased realism and functionality. Join Joshua as he guides you through the complexities of railway work equipment, enriching your modeling experience with practical knowledge and innovative techniques to bring your miniature worlds to life.
- **Loksound Decoder Clinic:** Peter Ross will offer an in-depth session on the intricacies of Loksound decoders. This clinic is designed to equip attendees with essential knowledge about sound decoders, which play a pivotal role in augmenting the realism and operational dynamics of model railways. Peter's expertise will guide participants through the benefits and technicalities of integrating Loksound decoders into their layouts, ensuring an immersive and authentic railroading experience.
- **Operating Small Layouts or Making Car Cards and Waybills by Robert Douglas:** Whether you're interested in the operational logistics of small layouts or the detailed process of creating car cards and waybills, this clinic offers practical advice and techniques.

Further clinics to be announced.

---

## Special Interest Groups and AGMs

**Location: Corbans Theatrette**

Friday 26th April 2024 6:30pm - **NZ MODEL RAILWAY GUILD AGM**

Friday 26th April 2024 7:30pm - **NZAMRC AGM**

Friday 26th April 2024 8:30pm - **DIVISION 5 NMRA**

Saturday 27th April 2024 12pm - **NZ 1:48** if you have an interest in On30 then please attend as well

There will be time available for Special Interest Groups (SIGs) and AGMs. Please contact the organising committee or make notes on your registration form and we will get in touch.

---

## NZAMRC Model Competition

The entry deadline of April 12 is fast approaching make sure to register



Who in their heart of hearts does not want to make the best models they can – the best locomotive, carriage, wagon, scene or whatever? But we're human and sometimes wanting is not enough, we need a focus, a deadline, and something bigger than ourselves to make the extra effort seem worth it. Entering the model competitions can provide that incentive – even more so with all the effort that has gone into preparations this time.

[Guidelines for Entrants](#)

[Online entry form](#)

The next best thing to being a mind reader – a quality that's very rare even among judges – is information gathered from the entry form. Like most online forms, you just scroll down, mostly ticking boxes, and it doesn't actually take long. No apologies, but there's something else too. Please try to include up to a couple of pages of supplementary information like prototype photos, plans or notes. You can upload these in any common format like jpg, pdf, tif, png, etc, or just bring paper copies along with your entry.



*The origins of the competitions were scratch builds, and there's still a place for those. This bungalow built by Gordon Barr is a good example.*

### **Like to be a judge?**

This is also our first call for people to be judges. While not an easy task this is something of a privilege and a chance to really get close to a whole spectrum of the country's best models – and it should be possible to do most if not all of it without missing other programmed activities.

## **Judge's Guidelines**

Peter Ross ([petrosnz15@gmail.com](mailto:petrosnz15@gmail.com)), Chair NZAMRC Competition Committee

---

## **Flatcar Load Challenge**



The Flatcar Load Challenge (FLC) is a modelling competition run by the local organising committee. The FLC is independent of the NZAMRC model competition and will be run under a different set of rules (the rules are given at the end of section of the newsletter). The Australasian Region of the National Model Railroaders Association is sponsoring the trophies for first, second and third place. The judging is by popular vote.

The FLC requires the modeler to make a load for a flatcar. We expect most modelers will take one of their flatcars and make the load. A modeler could make the flatcar as well as the load but there are no points for

the flatcar - the load only will be judged.

There are no restrictions on the load except that it must be made from at least two parts. There is an almost limitless choice for loads. Possible loads include a small steam locomotive, a large diesel engine or turbine, large pipes, a small submarine or a bathyscaphe, wheel sets for freight cars, large blocks of marble, a boat, a large run or tanks, a small spacecraft, large tanks, large spools of cable, circuit equipment, covered vintage cars, lumber, and the hero in a movie chasing a villain.

1. Each entry for the challenge consists of a flatcar with a load. The flatcar must be operational but will not be judged. The load only will be judged.
2. The judging will be by popular vote.
3. An entry can be in any scale from T to 7/8".
4. A modeler can submit more than one entry.
5. A modeler can submit an entry on behalf of another modeler.
6. No documentation is to be supplied with the model.
7. The load on a flatcar must be made from more than one part. These parts need not be scratch built.



---

## Venue parking and Public Transport

### Parking

Two car parks on the Corban estate will be available for attendees to park their cars. Between them, the two car parks have 65 parking spots. We anticipate about 15 of these spots will be used by other visitors to the Corban estate, leaving 50 spots for convention attendees. There is a paid carpark with a daily tariff of \$4 on Great North Road near the southeast corner of the Corban estate. There is a walking path under a railway bridge from the carpark to the estate. The walk will take several minutes.

To reduce the chance of missing out on a space, we recommend attendees who arrive by car carpool where reasonable.

[Click here to Register](#)

### Public transport

The Corban estate can be reached in two ways using public transportation and some walking. One way is to take a train to either Henderson or Sturges Road Train station and walk to the estate from the station. The estate is almost midway between the two stations and the walk will be 950m to 1.1 km. The exact distance will depend on which station and walking route you use. The other way is to take the 120 or 143 bus from Henderson and get off the bus at [22 Swanson Road](#) (stop 5434), and then walk 400 meters in a generally southeast direction to the main entrance.

---

## Partner program

The Partners' Program is being coordinated by Elizabeth Mead. Elizabeth has created the possible list of activities given below. The list is intended to cater for a wide range of interests. Elizabeth has first-hand experience of most of these activities and will be available to answer questions about them. Partners will choose on the day which activity or activities they wish to participate in. The choice could well depend on the weather. Partners can split into groups and each group goes on different activities. Some activities will incur a cost.

### Ferry to Devonport

From the city take a [ferry](#) to Auckland's North Shore and the suburb of Devonport.

From Devonport, walk past the Navy Museum and up North Head, or Maungauika, one of Auckland's volcanoes



### Walking Tour

A [walking tour](#) is a way to discover Auckland, pay what you feel the tour is worth at the finish.





### Film effects workshop

[Weta Workshop](#) is a film effects workshop, see how film effects are designed, built and brought to life.



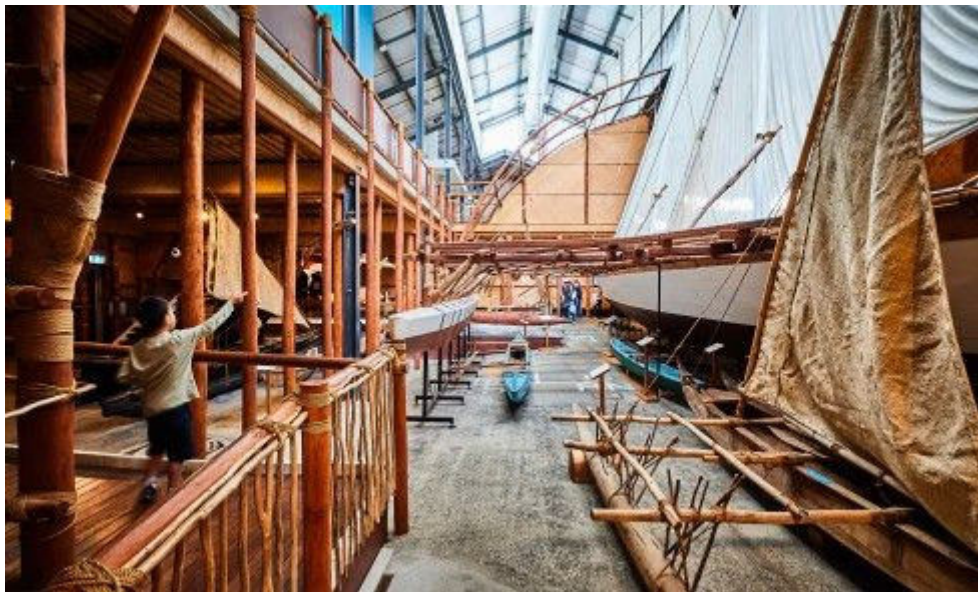
### Hauraki Gulf Marine Park

The [Auckland Whale & Dolphin Safari](#) offers tours of the Hauraki Gulf Marine Park



### **Maritime Museum**

The [New Zealand Maritime Museum](#) is a place where Aotearoa's stories of people and the sea are preserved.



### **Sky Tower**

View the Auckland skyline from the [Sky Tower](#)



## **Museum**

[Auckland War Memorial Museum](#) tells the story of Aotearoa.



## **Auckland Art Gallery**

Explore [Auckland Art Gallery](#) viewing New Zealand historic, modern and contemporary art



### **Auckland Zoo**

[Auckland Zoo](#) is home to at least 130 different species of animals



### **Waiheke Island**

Take a 40 min ferry ride to explore [Waiheke Island](#) and vineyards



---

## Accommodation

The accommodation in Auckland varies considerably in quality and the local organising committee (LOC) will leave it to individual attendees to decide on their

accommodation. Although there is some accommodation near the venue in Henderson, there is a greater choice to the east of Henderson. There are more accommodation choices within central Auckland and that is only 20km travel.

[Check out Trivago for accommodation options](#)

---

## Contacts

**Mike Hill** (Convener)

Email: [mike@hill.net.nz](mailto:mike@hill.net.nz)

Phone: [021758222](tel:021758222)

**James Kelso** (Treasurer)

Email: [jameskelso250@gmail.com](mailto:jameskelso250@gmail.com)

Phone: [0211163259](tel:0211163259)

**URL:** <https://www.nzamrc.org.nz/conventions/>

[Click here to Register](#)



*Copyright (C) 2024 NZAMRC All rights reserved.*

*This email has been sent to you as you are a valued member of the  
NZ Model Railway community and may have attended a previous convention.*

NZAMRC address:  
NZAMRC 2024 Convention PO BOX 301318 Auckland, Auckland 0752 New Zealand

Want to change how you receive these emails?  
You can [update your preferences](#) or [unsubscribe](#)

